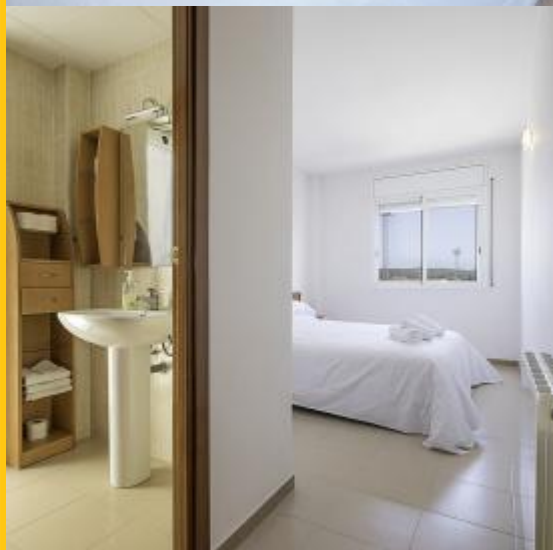
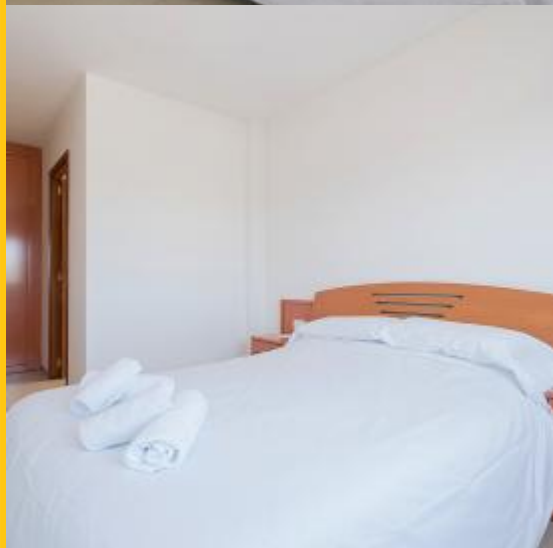


BH-3806



BarcelonaHome
WISH • FIND • ENJOY

HOLIDAY APARTMENT IN PALAFRUGELL



Description

Price / night from 81€

Price / month from 815€

This apartment is located at the foot of Gavarres, in the central and most characteristic part of Costa Brava in the province of Girona. It is a beautiful apartment located on the 4th floor of the building. The apartment is completely renovated and furnished with wooden furniture. It has a surface area of 110m2. The apartment has an ensuite room with private bathroom and bathtub, two double rooms with a wardrobe, a room with a bunk-bed and a shared bathroom which makes it perfect for families or a group of friends. The apartment also has a spacious living room furnished with a comfortable red sofa, TV and an exit to the balcony which gives a lot of light and freshness. In the living room, you will find a dining area with a comfortable wooden table with the capacity to host 6 people. The modern and spacious kitchen with a door to the balcony is fully equipped with all the necessary cooking utensils which is fabulous for those who love cooking.

This apartment is located 14 minutes from the municipality of Montrás, passing the Av d'Espanya and close to the San Margarida and Borrul towers, which are perfect for some fantastic souvenir photos. The area also has bars like La Guitarra Jazz club, Lolailo and nightclubs. The apartment is also just 8 minutes from the bus station of Palafrugell which is within 45 minutes from places of interest such as the San Sebastian Lighthouse and the Cala de Golfet.



Details

Address	Carrer Ample
Flat size	110m2
Capacity	8
Floor	4
Bedrooms	4
Bathrooms	2
Beds	3
Balcony	Yes
License	HUTB-028318

Reviews	Very good 8.4
€ Price	8
🛏 Quality	9
📍 Location	8
✓ Final cleaning and disinfection	9
🔑 Check-in	8



Surroundings

This beautiful apartment is located a 14min from the municipality of Montrás by crossing the Av'Espanya and it is also near to the two towers San Margarida and Con Borrul what make it a perfect spot to take good pictures from the view. On addition Palafrugell has some night life such as Jazz club guitarra, Lolailo and Nocturne club. In the other hand is only a 8 min walking from the Palafrugell bus stations which is a only 45min from places of interest such as Faro de San Sebastian and 45 min by bus to Cala de Golfet



Services

	General	Heating, Balcony, 24 hours emergency phone
	Building	Elevator
	Kitchen	Toaster , Oven , Micro-wave, Coffee maker, Kettle, Kitchen-ware, Fridge, Stove, Freezer
	Bathroom	Hair dryer, Bathtub
	Laundry	Washing machine, Bedding, Towels, Tumble dryer, Iron, Blankets
	Entertainment	TV, Wi-Fi FREE
	Optional services	



Good to know

Transfers

Pending amount

This amount is for the owner.
Upon your arrival you will be asked to pay the pending amount of the reservation.

Check-in and check-out

Check-in time from: 16:00
Check-out time until: 10:00

Late check-in

The check-in is free of charge during the hours: from 13:00 to 18:30. If your arrival time is outside of these hours, an extra charge will be applied.

Weekdays

20:00 - 23:00 = 30 €

23:00 - 01:00 = 50 €

Weekends and Holidays

20:00 - 23:00 = 30 €

23:00 - 01:00 = 50 €

Accommodation rules

Pets not allowed
Parties not allowed
No Smoking inside
Minimum age 20 years old



