

BH-2805



BarcelonaHome  
WISH • FIND • ENJOY



## APARTMENT PLAZA REIAL



### Description

Price / night from 65€

Price / month from 1950€

Lovely duplex Apartment Plaza Reial whose design combines Parisian elegance with pieces that create a cozy, country-style atmosphere. The first floor features a dining space with a glass table and wrought iron chairs, as well as a living area opening to a bright balcony with fantastic views of the street. You will love the intricate oval mirrors adorning the room, matching beautifully the high ceilings of the apartment. A set of smooth wooden stairs leads to an elevated sleeping area with a cozy double bed and ensuite bathroom. Peeking down from this floor you will see a fully equipped kitchen with wooden cabinets and an adjacent balcony allowing in plenty of light.

You will be in the truly dynamic center of the cultural and historic area with all major tourist attractions accessible by foot. The place is just steps away from La Rambla, the famous Placa Reial, the Liceu opera house, and a short walk from the Raval, Gòtico and el Born areas, known for great nightlife and dining options



## Details

Address	Carrer de Colom
Flat size	70m2
Capacity	6
Floor	1
Bedrooms	3
Bathrooms	2
Beds	4
Balcony	Yes
License	

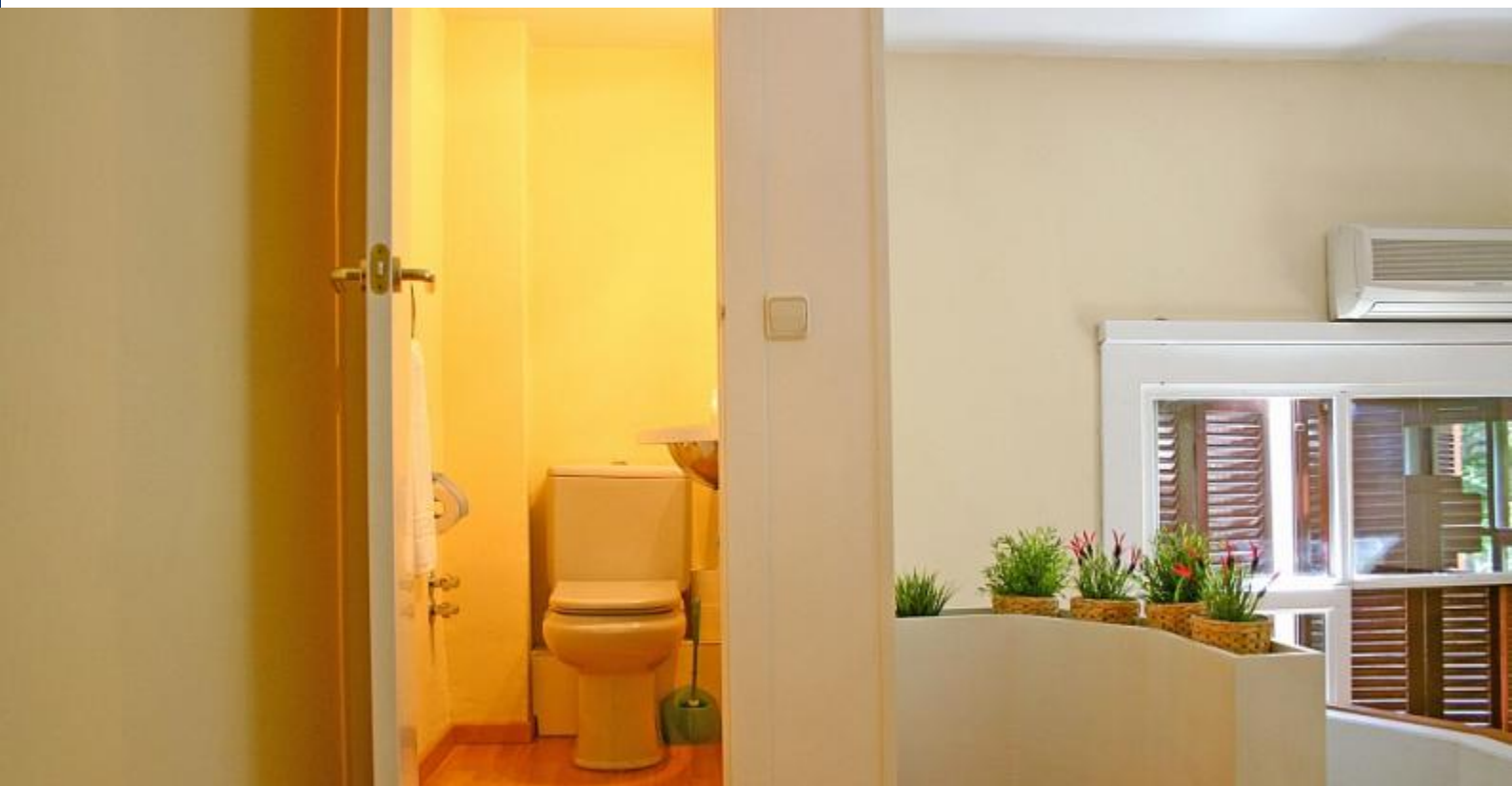
Reviews	Excellent 9.2
€ Price	7
🛏 Quality	10
📍 Location	10
✓ Final cleaning and desinfection	9
🔑 Check-in	10



## Surroundings







## Services

	General	Heating, Air conditioning, Balcony, Baby cot
	Building	Elevator
	Kitchen	Toaster , Oven , Coffee maker, Kettle, Kitchen-ware, Fridge, Stove, Freezer
	Bathroom	Bidet, Bathtub
	Laundry	Washing machine, Bedding, Towels, Tumble dryer, Blankets
	Entertainment	TV, Cable TV, Wi-Fi FREE
	Optional services	



## Good to know

### Transfers

#### Pending amount

This amount is for the owner.  
Upon your arrival you will be asked to pay the pending amount of the reservation.

#### Check-in and check-out

Check-in time from: 15:00  
Check-out time until: 11:00

#### Late check-in

The check-in is free of charge during the hours: from 13:00 to 18:30. If your arrival time is outside of these hours, an extra charge will be applied.

##### **Weekdays**

20:00 - 23:00 = 40 €

23:00 onwards = 50 €

##### **Weekends and Holidays**

20:00 - 23:00 = 40 €

23:00 onwards = 50 €

#### Accommodation rules

Pets not allowed  
Parties not allowed  
No Smoking inside

#### Note of the owner

The owner requires the payment of the 1st month at the moment you receive the booking confirmation.



